



Special Collections and University Archives

**J. Neal Griffith Collection
Manuscript Group 35**

**For Scholarly Use Only
Last Modified November 16, 2025**

**Indiana University of Pennsylvania
302 Stapleton Library
Indiana, PA 15705-1096
Voice: (724) 357-3039
Fax: (724) 357-4891**

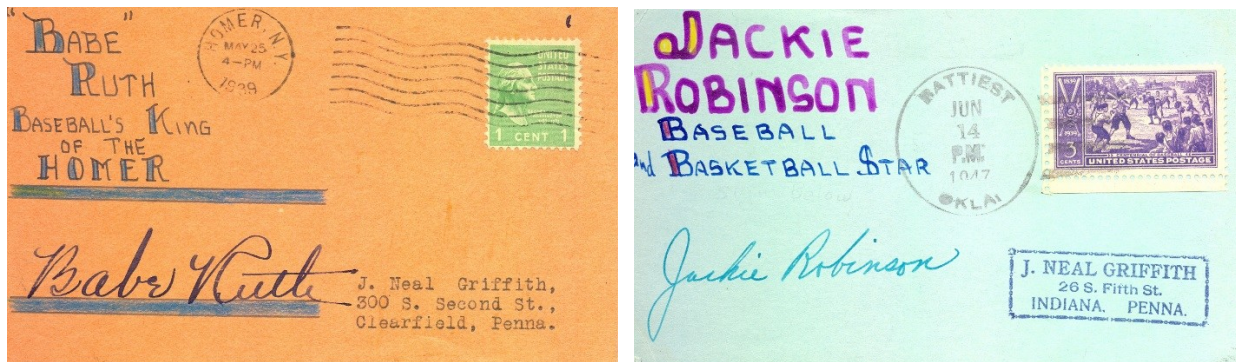
J. Neal Griffith Collection, Manuscript Group 35

Indiana University of Pennsylvania, Special Collections and University Archives
17 boxes; 17 linear feet

Biographical Note

John Neal Griffith (April 10, 1904 – October 5, 1994) was born in Jeannette, Westmoreland County, Pennsylvania. His parents were William Cannon Griffith (August 3, 1871 – March 11, 1951) and Lida A. Neal Griffith (1874-1906) who were married on June 6, 1900. The Griffith family lived in Marion Center before moving to Indiana, Pennsylvania. J. Neal Griffith later lived on Philadelphia Street in Indiana, where he was an active member of Grace United Methodist Church, and several civic organizations including the American Red Cross and the Boy Scouts of America. In 1969, he retired after working for the National Bank of the Commonwealth for 40 years. J. Neal Griffith wrote two books for the Historical and Genealogical Society of Indiana County including *Linton Park: American primitive* (1982) Call Number: ND 237 .P245 G74 and *Poems and Verses* (1984) Call Number: PS 3557 .R495 V47, which are available for research at the IUP Libraries.

J. Neal Griffith passed away in Johnstown, and he and his parents are interred at the Marion Center Memorial Cemetery.



Autographed postcards in the J. Neal Griffith Collection, including Babe Ruth and Jackie Robinson

Scope and Content

The J. Neal Griffith Collection contains 17 boxes consisting of postcard-sized decorated card stock signed by mostly North American and European celebrities from all walks of life, primarily postmarked from 1938 to 1978. Most of these autographs were solicited by J. Neal Griffith, but several autographs of more historical individuals (prior to the 1930s) were obtained by J. Neal Griffith for inclusion into his autograph collection. The card stock autographs were often decorated by Griffith with information about the celebrities, and the cards were mailed to specific place names. The collection is organized into categories and includes many famous individuals from the mid-20th century ranging from actors, athletes, authors, and astronauts to government officials, singers, and scientists.

The collection also contains 35mm slides of Indiana University of Pennsylvania events, and signed programs, photographs, and government documents from around the world.



Autographed postcards in the J. Neal Griffith Collection including Alvin C. York and Judy Garland

Provenance

The collection was donated by J. Neal Griffith with the express proviso that it be used for research. Note: this collection is restricted to research and display purposes only.

Box 1 Autograph Index

Box 2 Autographs

1. Ballet Dancers
2. Band Leaders
3. Comedians
4. Composers
5. Conductors
6. Dancers
7. Musicians
8. Pianists
9. Singers

Box 3 Autographs

1. Actors
2. Actresses
3. Motion Pictures
4. Radio Personalities
5. Television Personalities
6. Theatre

Box 4 Autographs

1. Authors
2. Columnists
3. Editors
4. Journalists
5. Novelists
6. Playwrights
7. Poets
8. Publishers
9. Writers

Box 5 Autographs

1. Authors
2. Architects
3. Artists
4. Cartoonists
5. Fashion Designers
6. Industrial Designers
7. Inventors
8. Museums/Zoos
9. Painters
10. Photographers
11. Sculptors
12. United States Governors

Box 6 Autographs

1. United States Cabinet
2. United States Representatives
3. United States Senators
4. Administrations
5. Agencies
6. Boards
7. Bureaus
8. Commissions
9. Committees
10. Councils and Counsels
11. Judges
12. Justices and Jurists

Box 7 Autographs (U.S. Government)

1. Lawyers
2. Leaders of Organizations
3. Mayors

4. Services
5. U.S. Ambassadors and Diplomats
6. U.S. Local Governments
7. U.S. Presidents, Vice-Presidents, and families
8. White House Staff
9. Ambassadors (International)
10. Canada-Miscellaneous
11. Chancellors
12. Foreign/ International Ministers
13. Foreign/ International Miscellaneous
14. Governors (International)
15. Mayors (International)

Box 8 Autographs

1. Premiers
2. Presidents (International)
3. Prime Ministers
4. Royalty
5. United Nations
6. West Germany (miscellaneous)
7. Astronauts
8. Explorers
9. College Presidents
10. Communications
11. Educational Associations
12. Educators

Box 9 Autographs

1. Historians
2. Librarians
3. Philosophers
4. University Professors
5. Anthropologists
6. Archaeologists
7. Bacteriologists and Virologists
8. Biologists
9. Chemists
10. Mathematicians
11. Medicine Miscellaneous
12. Physicians
13. Physicists
14. Physiologists

15. Political Scientists
16. Psychiatrists
17. Psychologists

Box 10 Autographs

1. Scientists
2. Scientists Miscellaneous
3. Sociologists
4. Surgeons
5. Zoologists
6. Auto Racing
7. Baseball
8. Basketball
9. Boxing
10. Football
11. Golf
12. Hockey
13. Skating
14. Skiing
15. Sports Miscellaneous
16. Swimming
17. Tennis
18. Track and Field

Box 11 Autographs

1. Bankers
2. Business Executives
3. Chamber of Commerce
4. Economists
5. Engineers
6. Hotel/Restaurant
7. Industrialists/Philanthropists
8. Industry-Airplanes
9. Industry-Automobiles
10. Industry-Railroads
11. Industry-Ships
12. Manufacturers
13. Oil Corporations
14. Presidents of Corporations
15. Steel Corporations
16. Child Organizations
17. Civil Rights Leaders

18. Labor Leaders
19. Leaders of Various Organizations

Box 12 Autographs

1. Religion-Baptist
2. Religion-Episcopal
3. Religion-Jewish
4. Religion-Methodist
5. Religion-Roman Catholic
6. Religion-miscellaneous
7. Social Workers and Activists
8. Veterans' Organizations
9. Women's Organizations
10. American Legion
11. Food Experts
12. Miscellaneous
13. U.S. Air Force
14. U.S. Army
15. U.S. Marines
16. U.S. Military Miscellaneous
17. U.S. Navy

Box 13 Slides of Indiana University of Pennsylvania

Box 14 Miscellaneous Programs

1. Ballets
2. Football Game (Pitt v. Temple, 1946)
3. Ice Capades
4. Musical Comedies
5. Operas
6. Plays
7. Concerts
8. Musical Comedies
9. Operas
10. Plays
11. Recitals
12. Symphonies

Box 15 Additional Autographs added to the collection (84 folders)

1. Spiro Theodore Agnew (1918-1996) 39th U.S. Vice President (1969-1973)
2. Mario Sandoval Alarcon (1923-2003) Letter, Guatemalan politician
3. Archbishop Damaskinos Papandreou (1891-1949) Archbishop of Athens and Greece

4. Neil Armstrong (1930-2012) American Astronaut, a true American hero, and the first person to walk on the moon
5. David Atkinson
6. Sgt. George Baker (1915-1975) World War Two Wartime Cartoonist
7. Stephen F. Bayne
8. Harry Belafonte (1927-) American singer, songwriter, and actor
9. Basil M. Bensin
10. Frederick Blackall
11. Harry Blackstone
12. Mel Blanc (1908-1989) American voice actor, comedian, the voice of Bugs Bunny
13. Don Blanding
14. Richard H. Bolt - Postcard
15. Chester Bowles
16. Francis Brennan
17. Philip Brown - Postcard
18. Carter L. Burgess - Letter
19. Milton Caniff
20. Robert Cashman - Postcard
21. Imogene Coca
22. John B. Coulter
23. John Creasey
24. Basley Crowther - Letter
25. Daniel Daniels
26. Gerard Darrow
27. Giorgio De Chirico
28. Irene Silva De Santolla
29. Ivan Dmitri - Letter
30. Salol Dupore
31. Lee Elder
32. Tom Ewell
33. Markus Feldman
34. Francisco da Costa Gomes (1914-2001) Portuguese military officer and politician, 15th President of the Portuguese Republic (1974-1976)
35. John Gavin - Letter
36. Arthur Godfrey
37. Bertrain Goodman
38. Arthur L. Guphill
39. Uta Hagen
40. Merle Haggard
41. Rev. L. Hartman
42. Robert Hendrickson - Letter
43. Susan Hight

44. Quaker Hill - Letter
45. George M. Humphrey (1890-1970) served as U.S. Secretary of the Treasury for President Dwight D. Eisenhower (1953-1957)
46. Roberta Jonay - Letter
47. Casey Jones
48. Carey Estes Kefauver (1903-1963) U.S. Representative (1939-1949) and U.S. Senator (1949-1963) from Tennessee
49. Kodaya
50. J. Fenwicke Lansdowne
51. Wilmarth Sheldon Lewis
52. Charles Augustus Lindbergh (1902-1974)
53. Gaetano Marzotto
54. Mary Margaret McBride
55. Andrew McNally - Letter
56. Sylis Mead
57. Alice Duer Miller
58. Gerald Nabarro -Letter
59. Ron Nessen - Letter
60. Andrian Nikolayer
61. Lou Nova
62. Maxfield Parrish
63. Eric Partridge
64. Pierre Pflimlin - Letter
65. Elmer Rice - Postcard
66. Eddie Rickenbacker
67. Edward Roecker
68. Jean Rostand
69. Telly Savalas (1922-1994) American actor
70. Henry F. Schricker
71. David R. Scott
72. Warner Shelly
73. General Lemeul C. Shepard
74. Donald K. Slayton
75. Eric Sloane
76. Jo Stafford
77. Pol Swings
78. Fernando Belaunde Terry
79. Merton Tice
80. Cloud Wampler
81. Fred Waring - Letter
82. Earle Warren (1891-1974) 30th Governor of California (1943-1953) and the 14th Chief Justice of the U.S. Supreme Court (1953-1969)

- 83. John Williams
- 84. Sergeant Alvin C. York (1887-1964) World War One veteran, Medal of Honor
- 85. Unidentified Autographs

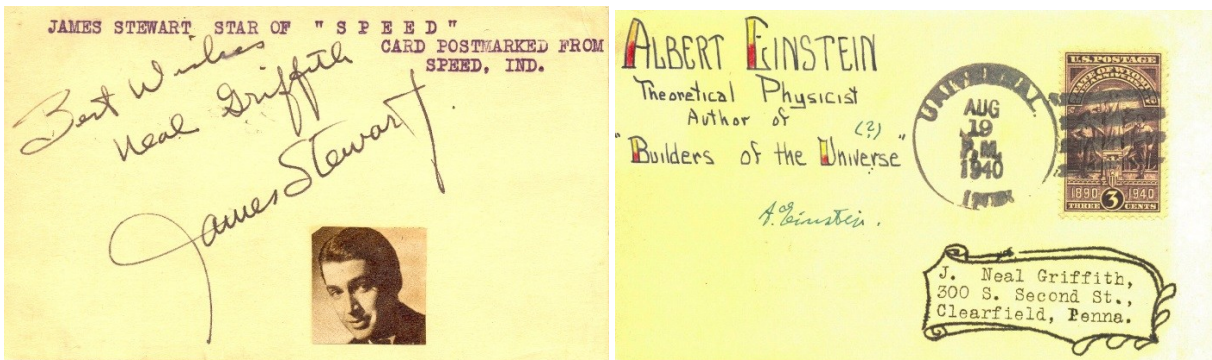
Box 16 Additional Autographs

- 1. Joseph W. Barr
- 2. Rainer Barzel
- 3. Warren Beatty (1937-) actor, producer, and director
- 4. Ingrid Bergman (1915-1982) with cast members
- 5. Bill Callahan
- 6. Cantiflas
- 7. Leslie Caron
- 8. Marge and George Champion
- 9. Cyd Charisse
- 10. Herbert Coleman
- 11. Olivia De Havilland (1916-) actress, starred in Gone with the Wind (1939)
- 12. Virginia De Lue
- 13. Princess Grace De Monaco (1929-1982) was actress Grace Kelly
- 14. Richard Derr
- 15. Douglas Fairbanks, Jr. (1909-2000) American actor
- 16. Roberta Flack
- 17. Francisco da Costa Gomes
- 18. Ava Gardner (1922-1990) American actress
- 19. John Gavin
- 20. Ethel Griffies
- 21. Gene Hackman (1930-) American actor
- 22. James Hewell
- 23. Hildegard
- 24. Janis Joplin (1943-1970) American singer and songwriter
- 25. Nora Kaye
- 26. Carole King
- 27. Lisa Kirk
- 28. Eartha Kitt
- 29. Hedy Lamarr (1914-2000) actress
- 30. Guy Lombardo (1902-1977) bandleader
- 31. June Lowell
- 32. Archie Moore
- 33. Jean Nideth
- 34. Ryan O'Neil
- 35. Julius Raab
- 36. Ella Raines
- 37. Maurice Richard

38. Eddie Roecker
39. Moira Shearer
40. William G. Straton
41. Randy Turpin
42. Unus
43. Erich Von Daniken
44. West, -----
45. Esther Williams
46. Robert Woodlow
47. Unidentified Pictures

Box 17 Signed Documents (7 documents)

1. Legal Document signed by Henry Clay (1777-1852), Wooford County, Brent vs. Yancy, 1800
2. Commission: Zaccheus F. Barber, Lieutenant, 20th Regiment of Infantry, New York, June 24, 1826, signed by N. F. Beck, Adjutant-General
3. Commission: Zaccheus F. Barber, Captain of Light Infantry, 20th Regiment of Infantry, New York, September 11, 1826, signed by N. F. Beck, Adjutant-General
4. Land Grant, State of Tennessee, April 18, 1827
5. Land Grant signed by President Franklin Pierce (1804-1869), April 15, 1853
6. Land Grant signed by President James Buchanan (1791-1868), April 1, 1859
7. Commission: President of the United States Ulysses S. Grant (1822-1885), appointing Angel Martinez as interim consul of the Mexican Republic at New Orleans, Louisiana, December 8, 1871



Autographed postcards from the J. Neal Griffith Collection including Jimmy Stewart and Albert Einstein